





# Disease extent according to baseline [<sup>18</sup>F] fluorodeoxyglucose PET/CT and molecular subtype: prediction of axillary treatment response after neoadjuvant systemic therapy for breast cancer

Florien J. G. van Amstel<sup>1,2,3,\*</sup>, Cornelis M. de Mooij<sup>1,2,3</sup> , Janine M. Simons<sup>3,4</sup>, Cristina Mitea<sup>1,3</sup>, Paul J. van Diest<sup>5</sup>, Patty J. Nelemans<sup>6</sup>, Carmen C. van der Pol<sup>7</sup>, Ernest J. T. Luiten<sup>8,9,10</sup>, Linetta B. Koppert<sup>11</sup>, Marjolein L. Smidt<sup>2,3</sup>, Thiemo J. A. van Nijnatten<sup>1,3</sup>  and the REFINE Study Group

<sup>1</sup>Department of Radiology and Nuclear Medicine, Maastricht University Medical Center+, Maastricht, The Netherlands

<sup>2</sup>Department of Surgery, Maastricht University Medical Center+, Maastricht, The Netherlands

<sup>3</sup>GROW – Research Institute for Oncology and Reproduction, Maastricht University, Maastricht, The Netherlands

<sup>4</sup>Department of Radiotherapy, Erasmus Medical Center, Rotterdam, The Netherlands

<sup>5</sup>Department of Pathology, University Medical Center Utrecht, Utrecht, The Netherlands

<sup>6</sup>Department of Epidemiology, Maastricht University, Maastricht, The Netherlands

<sup>7</sup>Department of Surgical Oncology, Alrijne Hospital, Leiderdorp, The Netherlands

<sup>8</sup>Department of Surgery, Amphia Hospital Breda, Breda, The Netherlands

<sup>9</sup>Tawam Breast Care Center, Tawam Hospital, Al Ain, United Arab Emirates

<sup>10</sup>Department of Surgery, College of Medicine and Health Sciences, United Arab Emirates University, Al Ain, United Arab Emirates

<sup>11</sup>Department of Surgical Oncology, Erasmus Medical Center, Rotterdam, The Netherlands

\*Correspondence to: Florien J. G. van Amstel, Department of Radiology and Nuclear Medicine, Maastricht University Medical Centre+, PO Box 5800, Maastricht, 6202 AZ, The Netherlands (e-mail: [florien.vanamstel@maastrichtuniversity.nl](mailto:florien.vanamstel@maastrichtuniversity.nl))

Collaborators of this study are listed under the heading Collaborators.

Presented to a meeting of the European Society of Radiology, Vienna, Austria, February 2024.

## Abstract

**Background:** Axillary disease extent according to baseline [<sup>18</sup>F]fluorodeoxyglucose PET/CT combined with pathological axillary treatment response has been proposed to guide de-escalation of axillary treatment for clinically node-positive breast cancer patients treated with neoadjuvant systemic therapy. The aim of this study was to assess whether axillary disease extent according to baseline [<sup>18</sup>F]fluorodeoxyglucose PET/CT and breast cancer molecular subtype are predictors of axillary pCR.

**Methods:** This study included clinically node-positive patients treated with neoadjuvant systemic therapy in the prospective Radioactive Iodine Seed placement in the Axilla with Sentinel lymph node biopsy (‘RISAS’) trial (NCT02800317) with baseline [<sup>18</sup>F] fluorodeoxyglucose PET/CT imaging available. The predictive value of axillary disease extent according to baseline [<sup>18</sup>F] fluorodeoxyglucose PET/CT and breast cancer molecular subtype to estimate axillary pCR was evaluated using logistic regression analysis. Discriminative ability is expressed using ORs with 95% confidence intervals.

**Results:** Overall, 185 patients were included, with an axillary pCR rate of 29.7%. The axillary pCR rate for patients with limited versus advanced baseline axillary disease according to [<sup>18</sup>F]fluorodeoxyglucose PET/CT was 31.9% versus 26.1% respectively. Axillary disease extent was not a significant predictor of axillary pCR (OR 0.75 (95% c.i. 0.38 to 1.46) ( $P = 0.404$ )). There were significant differences in axillary pCR rates between breast cancer molecular subtypes. The lowest probability (7%) was found for hormone receptor+/human epidermal growth factor receptor 2– tumours. Using this category as a reference group, significantly increased ORs of 14.82 for hormone receptor+/human epidermal growth factor receptor 2+ tumours, 40 for hormone receptor–/human epidermal growth factor receptor 2+ tumours, and 6.91 for triple-negative tumours were found ( $P < 0.001$ ).

**Conclusion:** Molecular subtype is a significant predictor of axillary pCR after neoadjuvant systemic therapy, whereas axillary disease extent according to baseline [<sup>18</sup>F]fluorodeoxyglucose PET/CT is not.

## Introduction

Patients with clinically node-positive (cN+) breast cancer often receive neoadjuvant systemic therapy (NST)<sup>1</sup>. The best-case scenario is achieving a pCR, defined by the absence of remaining in-breast tumour (that is breast pCR) and/or axillary lymph

node metastases (ALNMs; that is axillary pCR). On average, 37% of cN+ breast cancer patients treated with NST achieve an axillary pCR<sup>2</sup>, with the rates varying between breast cancer molecular subtypes<sup>3–5</sup>. A systematic review and meta-analysis by Samiei et al.<sup>6</sup> showed that the probability of achieving an

Received: April 23, 2024. Revised: June 19, 2024. Accepted: July 23, 2024

© The Author(s) 2024. Published by Oxford University Press on behalf of BJS Foundation Ltd.

This is an Open Access article distributed under the terms of the Creative Commons Attribution-NonCommercial License (<https://creativecommons.org/licenses/by-nc/4.0/>), which permits non-commercial re-use, distribution, and reproduction in any medium, provided the original work is properly cited. For commercial re-use, please contact [reprints@oup.com](mailto:reprints@oup.com) for reprints and translation rights for reprints. All other permissions can be obtained through our RightsLink service via the Permissions link on the article page on our site—for further information please contact [journals.permissions@oup.com](mailto:journals.permissions@oup.com).

axillary pCR is 18% for hormone receptor (HR)+/human epidermal growth factor receptor 2 (HER2)-, 45% for HR+/HER2+, 60% for HR-/HER2+, and 48% for triple-negative breast cancer.

Axillary lymph node dissection (ALND) has been the standard treatment for cN+ breast cancer with remaining axillary disease after NST, but is not expected to benefit patients with an axillary pCR. High diagnostic accuracy is crucial for identifying axillary pCR after NST, to avoid omission of axillary surgery in the case of chemotherapy-resistant ALNMs<sup>7</sup>. However, current imaging modalities are not very accurate with regard to identifying axillary pCR for cN+ patients after NST and thus carry an unacceptable risk of failing to detect residual disease<sup>8</sup>. Less invasive axillary restaging procedures than ALND are needed to identify axillary pCR, and to adjust axillary treatment strategies accordingly<sup>8,9</sup>, with identification of the optimal axillary treatment strategy being debated<sup>10</sup>.

Baseline disease extent, based on the number of ALNMs before NST, combined with axillary treatment response detected by less invasive axillary restaging procedures is used to guide axillary treatment strategies<sup>11,12</sup>. Axillary pCR has been shown to be strongly dependent on breast cancer molecular subtype<sup>6</sup>. Therefore, incorporating molecular subtype into axillary treatment strategies may optimize patient-tailored management and enable further de-escalation of axillary treatment.

Therefore, the aim of this study was to assess whether axillary disease extent according to baseline [<sup>18</sup>F]fluorodeoxyglucose (FDG) PET/CT and breast cancer molecular subtype are predictors of axillary pCR for cN+ patients treated with NST in a retrospective analysis of the prospective Radioactive Iodine Seed placement in the Axilla with Sentinel lymph node biopsy (RISAS) trial.

## Methods

### Study design and patients

cN+ breast cancer patients who participated in the prospective RISAS trial (NCT02800317; METC number 2016-412) were included. In the RISAS trial, the diagnostic accuracy of the RISAS procedure was investigated in 13 institutions in the Netherlands between March 2017 and December 2019<sup>7</sup>. RISAS participants underwent the RISAS procedure followed by completion ALND (cALND). The presence of ALNMs at the time of breast cancer diagnosis was confirmed by either core needle biopsy or fine needle aspiration. Patients who were eligible for participation in the RISAS trial were excluded in the case of infraclavicular or supraclavicular lymph node metastases (cN3a or cN3c), distant (oligo)metastases, a sentinel lymph node biopsy performed before NST, or previous radiotherapy to the ipsilateral axilla. Informed consent was obtained from all participants.

This study includes RISAS participants who underwent baseline [<sup>18</sup>F]FDG PET/CT imaging before the start of NST. Data on age, tumour size, tumour localization, clinical stage, histopathological subtype, molecular subtype, and treatment response were collected. Due to the retrospective analysis, the necessity to obtain additional informed consent was waived by all local medical ethics committees of the participating institutions.

### [<sup>18</sup>F]fluorodeoxyglucose PET/CT imaging

All patients underwent whole-body [<sup>18</sup>F]FDG PET/CT imaging before NST initiation, using a standard acquisition protocol, in accordance with the practices of the institutions involved in this study. [<sup>18</sup>F]FDG PET/CT imaging was performed according to European Association of Nuclear Medicine (EANM) guidelines. All patients had to fast for at least 4–6 h before injection of

intravenous [<sup>18</sup>F]FDG. The blood glucose levels of all patients were less than 11 mmol/l. After glucose testing, an intravenous [<sup>18</sup>F]FDG injection was administered to all patients. After a resting interval of 45–60 min whole-body [<sup>18</sup>F]FDG PET/CT imaging was performed.

All [<sup>18</sup>F]FDG PET/CT images were centrally reviewed on a dedicated commercially available workstation (syngo.via 6.4; Siemens Healthcare, Erlangen, Germany) and a minority of the [<sup>18</sup>F]FDG PET/CT images were reconstructed according to European Association of Nuclear Medicine Research Ltd (EARL) guidelines. Each visible ALNM on an [<sup>18</sup>F]FDG PET/CT image was scored using a four-point confidence scale (0, similar to surrounding lymph nodes; 1, slightly more intense than other lymph nodes; 2, moderately intense; and 3, very intense)<sup>13</sup>. First, the number of hypermetabolic ALNMs (score 1–3) was noted from the original report and patients were classified as having either limited (1–3 hypermetabolic ALNMs) or advanced (greater than or equal to 4 hypermetabolic ALNMs) baseline axillary disease. Thereafter, all [<sup>18</sup>F]FDG PET/CT images were reviewed by a final-year resident in radiology and nuclear medicine (T.J.A.v.N.), with 4 years of clinical experience in [<sup>18</sup>F]FDG PET/CT and breast imaging (reviewer 1). The number of hypermetabolic ALNMs from the original report was compared with the number of hypermetabolic ALNMs determined by reviewer 1. When the number of hypermetabolic ALNMs was missing from the original report or there was a discrepancy between the original report and reviewer 1 regarding the number of hypermetabolic ALNMs, another nuclear medicine physician (C.M.), with more than 10 years of experience in nuclear imaging, reviewed the images to obtain consensus on the number of hypermetabolic ALNMs.

### Neoadjuvant systemic therapy

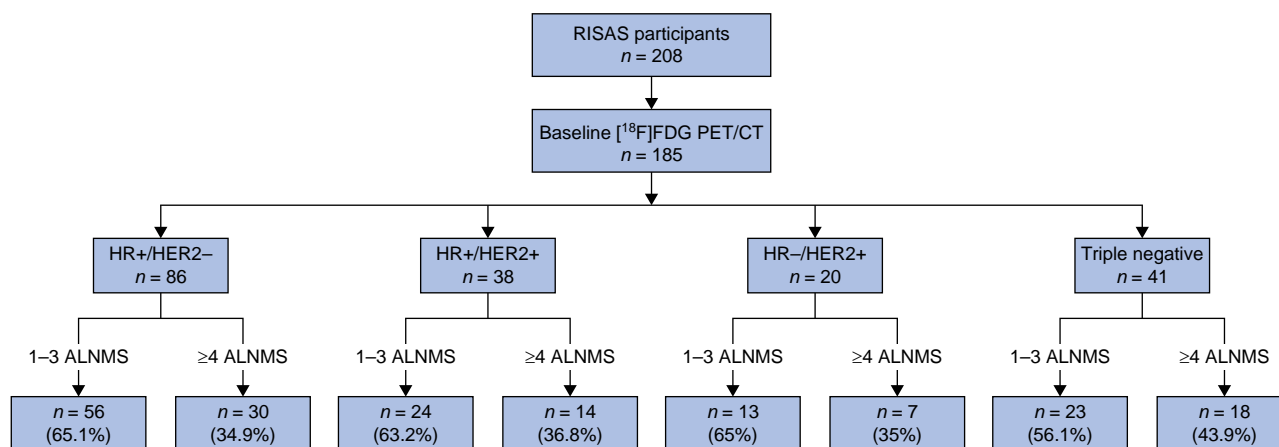
The NST regimen was based on the Dutch national breast cancer guidelines that were in effect at the time of the RISAS trial<sup>14</sup>. Generally, anthracycline- and/or taxane-based regimens were administered. HER2-positive breast cancer patients also received targeted therapy (trastuzumab alone or trastuzumab and pertuzumab).

### Histopathology

All excised axillary lymph nodes were stained with haematoxylin and eosin. On-site use of immunohistochemistry was not obligatory. The absence of any residual disease (that is isolated tumour cells, micrometastases, and macrometastases) was defined as axillary pCR. As part of the prospective RISAS trial, all RISAS lymph nodes negative with regard to haematoxylin and eosin staining underwent immunohistochemistry and additional sectioning for central pathology review as previously described<sup>7</sup>.

### Statistical analysis

Proportions of patients with axillary pCR were compared between subgroups of patients with limited and advanced axillary disease according to baseline [<sup>18</sup>F]FDG PET/CT and subgroups of patients with different breast cancer molecular subtypes. The chi-squared test and Fisher's exact test were used for significance testing. To evaluate the predictive effect of axillary disease extent according to baseline [<sup>18</sup>F]FDG PET/CT and molecular subtype on the probability of achieving axillary pCR after NST, univariable logistic regression analyses were performed. Discriminative ability is expressed using ORs with 95% confidence intervals. The predicted probabilities of the univariable models were used for the construction of receiver



**Fig. 1** Distribution of patients with different breast cancer molecular subtypes with either limited or advanced axillary disease according to baseline [ $^{18}\text{F}$ ]fluorodeoxyglucose PET/CT

RISAS, Radioactive Iodine Seed placement in the Axilla with Sentinel lymph node biopsy; FDG, fluorodeoxyglucose; HR, hormone receptor; HER2, human epidermal growth factor receptor 2; ALNMs, axillary lymph node metastases.

operating characteristic (ROC) curves and the calculation of corresponding area under the curve (AUC) values. A test for equality of paired ROC curves was used ('roccomp command' in STATA). Statistical analyses were performed using SPSS<sup>®</sup> (IBM, Armonk, NY, USA; 26.0) and STATA (release 14). All statistical tests were two-sided and  $P < 0.050$  was considered statistically significant.

## Results

### Baseline and treatment characteristics

A total of 208 cN+ breast cancer patients were prospectively enrolled in the RISAS trial and underwent the RISAS procedure followed by cALND. For 88.9% (185 of 208) of patients, baseline [ $^{18}\text{F}$ ]FDG PET/CT imaging was performed. The mean patient age was 52 years and the mean tumour size was 40 mm. Limited baseline axillary disease was seen in 62.7% (116 of 185) and advanced axillary disease in 37.3% (69 of 185) of patients. Primary tumours were HR+/HER2- in 46.5% (86 of 185), HR+/HER2+ in 20.5% (38 of 185), HR-/HER2+ in 10.8% (20 of 185), and triple negative in 22.2% (41 of 185) of patients (Fig. 1). Overall, 29.7% (55 of 185) of patients achieved an axillary pCR. Clinicopathological characteristics are listed in Table 1.

### Axillary pCR stratified by baseline axillary disease extent and breast cancer molecular subtype

There was no significant difference in axillary pCR rates between patients with limited and advanced baseline axillary disease (31.9% (37 of 116) versus 26.1% (18 of 69) respectively ( $P = 0.403$ )) according to [ $^{18}\text{F}$ ]FDG PET/CT. However, axillary pCR rates varied significantly amongst molecular subtypes. The highest axillary pCR rate was seen for HR-/HER2+ patients (75% (15 of 20)), followed by HR+/HER2+ patients (52.6% (20 of 38)), triple-negative patients (34.1% (14 of 41)), and HR+/HER2- patients (7% (6 of 86)) ( $P < 0.001$ ).

Within each of the molecular subtypes, the axillary pCR rates for limited and advanced baseline axillary disease did not differ significantly (5.4% (3 of 56) versus 10% (3 of 30) ( $P = 0.416$ ) for HR+/HER2- patients, 62.5% (15 of 24) versus 35.7% (5 of 14) ( $P = 0.111$ ) for HR+/HER2+ patients, 76.9% (10 of 13) versus 71.4% (5 of 7) ( $P = 1.000$ ) for HR-/HER2+ patients, and 39.1% (9 of 23) versus 27.8% (5 of 18) ( $P = 0.447$ ) for triple-negative patients)

**Table 1** Patient and treatment characteristics;  $n = 185$

Variables	Values
Age (years), mean(s.d.)	52(11.1)
Tumour size (mm), mean(s.d.)	40(20)
Clinical T status*	
cTx	3 (1.6)
cT1	19 (10.3)
cT2	116 (62.7)
cT3	29 (15.7)
cT4	18 (9.7)
Clinical N status*	
cN1	130 (70.3)
cN2	39 (21.1)
cN3	16 (8.6)
Oestrogen receptor†	
Negative	65 (35.1)
Positive	120 (64.9)
Progesterone receptor†	
Negative	88 (47.6)
Positive	97 (52.4)
HER2 receptor†	
Negative	127 (68.6)
Positive	58 (31.4)
Breast cancer molecular subtype‡	
HR+/HER2-	86 (46.5)
HR+/HER2+	38 (20.5)
HR-/HER2+	20 (10.8)
Triple negative	41 (22.2)
Axillary treatment response‡	
pCR	55 (29.7)
RD	130 (70.3)

Values are n (%) unless otherwise indicated. \*Based on imaging measurements. †Determined by core biopsy at time of diagnosis before neoadjuvant systemic therapy. ‡Determined by axillary surgery after completion of neoadjuvant systemic therapy. HER2, human epidermal growth factor receptor 2; HR, hormone receptor; RD, residual disease.

(Table 2). For HR+/HER2- patients, only 3.5% (3 of 86) had limited baseline axillary disease and axillary pCR, compared with 39.5% (15 of 38) of HR+/HER2+ patients, 50% (10 of 20) of HR-/HER2+ patients, and 22% (9 of 41) of triple-negative patients (Fig. 1 and Table 2).

### Univariable logistic regression

Two separate univariable logistic regression models were used to evaluate the predictive effect on the probability of achieving

**Table 2 Axillary treatment response stratified by axillary disease extent according to baseline [<sup>18</sup>F]fluorodeoxyglucose PET/CT and breast cancer molecular subtype**

Breast cancer molecular subtype	Sample size	Limited axillary disease, n = 116	Advanced axillary disease, n = 69	P
<b>HR+/HER2-</b>	86			
Axillary pCR		3/56 (5.4)	3/30 (10)	0.416
Axillary RD		53/56 (94.6)	27/30 (90)	
<b>HR+/HER2+</b>	38			
Axillary pCR		15/24 (62.5)	5/14 (35.7)	0.111
Axillary RD		9/24 (37.5)	9/14 (64.3)	
<b>HR-/HER2+</b>	20			
Axillary pCR		10/13 (76.9)	5/7 (71.4)	1.000
Axillary RD		3/13 (23.1)	2/7 (28.6)	
<b>Triple negative</b>	41			
Axillary pCR		9/23 (39.1)	5/18 (27.8)	0.447
Axillary RD		14/23 (60.9)	13/18 (72.2)	

Values are n or n/n (%). HR, hormone receptor; HER2, human epidermal growth factor receptor 2; RD, residual disease.

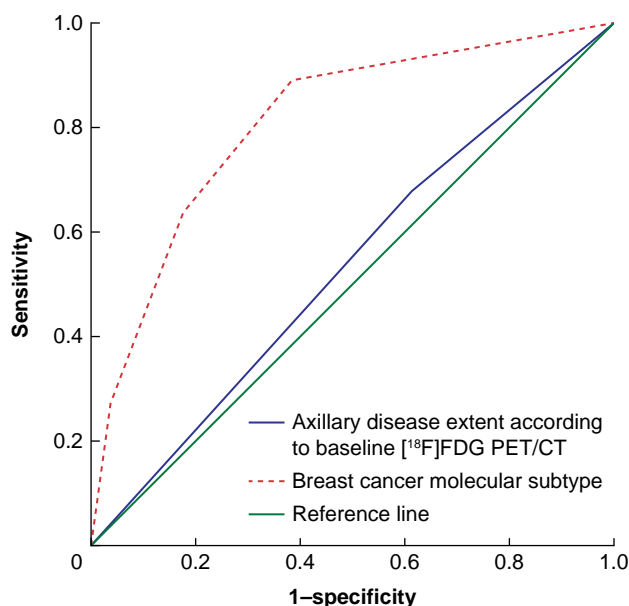
axillary pCR after NST; one with axillary disease extent according to baseline [<sup>18</sup>F]FDG PET/CT as an independent variable and one with breast cancer molecular subtype as an independent variable. The OR for axillary pCR associated with limited versus advanced baseline axillary disease extent was 0.75 (95% c.i. 0.38 to 1.46) ( $P=0.404$ ). Molecular subtype was designated as the categorical variable, with patients with HR+/HER2- tumours designated as the reference category. Significantly increased ORs of 14.82 (95% c.i. 5.21 to 42.16) for patients with HR+/HER2+ tumours, 40 (95% c.i. 10.87 to 148.05) for patients with HR-/HER2+ tumours, and 6.91 (95% c.i. 2.42 to 19.78) for patients with triple-negative tumours were found ( $P<0.001$ ). [Figure 2](#) shows the ROC curves based on the predicted probabilities of each model. The AUC for axillary disease extent according to baseline [<sup>18</sup>F]FDG PET/CT was 0.533 (95% c.i. 0.442 to 0.623) ( $P=0.485$ ) and the AUC for molecular subtype was 0.809 (95% c.i. 0.740 to 0.877) ( $P<0.001$ ), and the difference between these AUCs was statistically significant ( $P<0.001$ ) ([Fig. 2](#)).

## Discussion

This study investigated the predictive effect of axillary disease extent according to baseline [<sup>18</sup>F]FDG PET/CT and breast cancer molecular subtype on the probability of achieving axillary pCR after NST. The breast cancer molecular subtype is significantly correlated with axillary pCR, whereas axillary disease extent according to baseline [<sup>18</sup>F]FDG PET/CT is not.

Previous studies have already demonstrated the importance of molecular subtype in the evaluation of axillary response after NST in breast cancer<sup>3,15</sup>. The axillary pCR rates for HR+/HER2-, HR+/HER2+, HR-/HER2+, and triple-negative breast cancer reported in the present study are well in line with previous findings<sup>5,16,17</sup>.

Axillary disease extent according to baseline [<sup>18</sup>F]FDG PET/CT does not appear to be a useful predictor of axillary pCR after NST. The axillary pCR rates for limited and advanced baseline axillary disease did not differ significantly overall (31.9% versus 26.1% respectively) and this finding was consistent among all molecular subtypes. This is in line with a study by Ng *et al.*<sup>17</sup>, who found no significant difference in axillary pCR rates between patients with low (1–2 abnormal ALNMs) or high (greater than or equal to 3 abnormal ALNMs) axillary disease according to



**Fig. 2 Receiver operating characteristic (ROC) curves evaluating the predictive effect of axillary disease extent according to baseline [<sup>18</sup>F]fluorodeoxyglucose PET/CT and breast cancer molecular subtype on the probability of achieving axillary pCR**

FDG, fluorodeoxyglucose.

baseline ultrasonography (44% versus 42% respectively). A study by van Loevezijn *et al.*<sup>18</sup> reported axillary pCR rates of 32% for patients with low (less than 4 hypermetabolic ALNMs) and 44% for patients with high (greater than or equal to 4 hypermetabolic ALNMs) axillary disease extent according to baseline [<sup>18</sup>F]FDG PET/CT. A study by Garcia-Tejedor *et al.*<sup>19</sup> reported an axillary pCR rate of 40% in the case of advanced axillary disease according to baseline ultrasonography (that is at least three suspicious ALNMs) and even higher axillary pCR rates for HER2-positive (68%) and triple-negative (45%) patients.

Although axillary disease extent is not a significant predictor of axillary pCR, it is used in clinical practice to guide adjuvant axillary treatment. This is illustrated by an axillary treatment protocol that combines the number of hypermetabolic ALNMs according to baseline [<sup>18</sup>F]FDG PET/CT with the Marking Axillary lymph nodes with Radioactive Iodine seeds (MARI) procedure. This protocol recommends no further treatment for patients with limited axillary disease (1–3 hypermetabolic ALNMs) and axillary pCR according to the MARI procedure. For patients with advanced axillary disease (greater than or equal to 4 hypermetabolic ALNMs) according to baseline [<sup>18</sup>F]FDG PET/CT and axillary pCR according to the MARI procedure, axillary radiotherapy is recommended. For patients with limited baseline axillary disease and axillary residual disease according to the MARI procedure, axillary radiotherapy is also recommended, whereas, for patients with advanced baseline axillary disease and residual disease according to the MARI procedure, both ALND and axillary radiotherapy are recommended<sup>11,12</sup>. It is questionable whether an axillary treatment protocol that combines the number of hypermetabolic ALNMs according to baseline [<sup>18</sup>F]FDG PET/CT and pathological axillary response to NST is entirely justified, as only molecular subtype was a significant predictor of axillary response to NST in the present study. Almost all (96.5%) of the HR+/HER2- patients in this study would have an indication for

ALND ± axillary radiotherapy, compared with 50–78% of patients with other molecular subtypes. Therefore, the introduction of information on molecular subtype may be highly relevant in axillary treatment protocols.

The present study focused on predictors of axillary pCR for cN+ patients treated with NST. However, previous studies have indicated that axillary pCR after NST does not have the same impact for all molecular subtypes<sup>20,21</sup>. Especially for those with HR+/HER2– tumours, the prognosis, in terms of recurrence-free and overall survival, for patients with axillary pCR seems similar to that for patients with residual disease in up to three axillary lymph nodes in surgical specimens after NST<sup>20,21</sup>. This might provide an additional argument to pay attention to molecular subtype in axillary treatment protocols.

Apart from axillary treatment protocols, the importance of information on breast cancer molecular subtype might also be considered in ongoing studies. At this moment, various clinical trials are investigating the best way to manage axillary residual disease after NST and surgery. The Alliance A011202 (NCT01901094) and TAXIS (NCT03513614) trials are investigating whether axillary radiotherapy and tailored axillary surgery combined with regional nodal irradiation can safely replace cALND for patients with axillary residual disease after NST<sup>22,23</sup>. Additionally, the MINIMAX (NCT04486495) and AXSANA (NCT04373655) registry trials are assessing the impact of different axillary restaging procedures, the oncological safety, and the impact on quality of life for cN+ patients after NST<sup>10,24</sup>. As cALND is more frequently being omitted for cN+ patients with axillary residual disease after NST, the results of these trials are highly anticipated. It would be highly beneficial for ongoing and future studies to include information on molecular subtype in their designs.

This study has some limitations. Axillary disease extent was only evaluated according to baseline [<sup>18</sup>F]FDG PET/CT and results from this study may not be generalizable to settings wherein pathological confirmation or other imaging modalities, such as axillary ultrasonography or MRI, are used for evaluation of the number of ALNMs at baseline. However, baseline [<sup>18</sup>F]FDG PET/CT is known to accurately stage regional and distant disease dissemination and has a positive predictive value of 98% with regard to detecting ALNMs<sup>25</sup>. Moreover, 13 institutions participated in the prospective multicentre RISAS trial. Only a minority of the [<sup>18</sup>F]FDG PET/CT images were reconstructed according to EARL guidelines, allowing data pooling with regard to the metabolic information in each [<sup>18</sup>F]FDG PET/CT image. Consequently, it was not possible to combine measurements on metabolic parameters such as standardized uptake values between the participating centres.

This study demonstrates that molecular subtype is a significant predictor of axillary pCR after NST, whereas axillary disease extent according to baseline [<sup>18</sup>F]FDG PET/CT is not. Information on molecular subtype may be relevant to guide further axillary treatment for cN+ patients treated with NST.

## Collaborators

L. de Beer (Martini Hospital, Groningen, the Netherlands); E.G. Boerma (Maastricht University Medical Center+, Maastricht, the Netherlands); M. Boskamp (Wilhelmina Hospital, Assen, the Netherlands); E.M.J. Brouwers-Kuyper (Albert Schweitzer Hospital, Dordrecht, the Netherlands); C.M.E. Contant (Maasstad Hospital, Rotterdam, the Netherlands); A.W.F. du Mée (Amphia Hospital, Breda, the Netherlands); H.J. Heijmans (Hospital Group

Twente, Breast Clinic Oost-Nederland, Hengelo, the Netherlands); S. Ho-Han (Albert Schweitzer Hospital, Dordrecht, the Netherlands); F. Hulsebosch (Franciscus Gasthuis & Vlietland, Schiedam, the Netherlands); A. Jager (Erasmus Medical Center Cancer Institute, Rotterdam, the Netherlands); J.A.J. Janssen (Ikazia Hospital, Rotterdam, the Netherlands); B.L.R. Kam (Ikazia Hospital, Rotterdam, the Netherlands); W. Kelder (Martini Hospital, Groningen, the Netherlands); T.M.A.L. Klem (Franciscus Gasthuis & Vlietland, Schiedam, the Netherlands); K.P. Koopmans (Martini Hospital, Groningen, the Netherlands); M.B.I. Lobbes (Zuyderland Medical Center, Sittard-Geleen, the Netherlands); M.B.E. Menke-Pluijmers (Albert Schweitzer Hospital, Dordrecht, the Netherlands); C. de Monye (Erasmus Medical Center, Rotterdam, the Netherlands); P. Sars (Bravis Hospital, Roosendaal, the Netherlands); L.H.M. Smit (Treant Zorggroep Hospital, Hoogeveen, the Netherlands); E. van Haaren (Zuyderland Medical Center, Sittard-Geleen, the Netherlands); D. van Klaveren (Erasmus Medical Center, Rotterdam, the Netherlands); J. Veltman (Hospital Group Twente, Breast Clinic Oost-Nederland, Hengelo, the Netherlands); C. Verhoef (Erasmus Medical Center Cancer Institute, Rotterdam, the Netherlands); W.J. Vles (Ikazia Hospital, Rotterdam, the Netherlands).

## Funding

T.J.A.v.N. and F.J.G.v.A. received funding for this study from the Health Foundation Limburg (SWOL; project 20.048) and the Dutch Cancer Society (REFINE trial; project 14055). None of the other authors received support from any organization for the submitted work.

## Disclosure

M.L.S. has received institutional research funding (not related to this study) from Pharma, Nutricia, and Servier, for a microbiota study. T.J.A.v.N. has received speaker honoraria from Bayer and GE Healthcare. The authors declare no conflict of interest.

## Data availability

Data and code for the final analyses are available from the corresponding author upon reasonable request.

## References

1. Cao S, Liu X, Cui J, Liu X, Zhong J, Yang Z et al. Feasibility and reliability of sentinel lymph node biopsy after neoadjuvant chemotherapy in breast cancer patients with positive axillary nodes at initial diagnosis: an up-to-date meta-analysis of 3,578 patients. *Breast* 2021;**59**:256–269
2. van Nijnatten TJ, Simons JM, Smidt ML, van der Pol CC, van Diest PJ, Jager A et al. A novel less-invasive approach for axillary staging after neoadjuvant chemotherapy in patients with axillary node-positive breast cancer by combining radioactive iodine seed localization in the axilla with the sentinel node procedure (RISAS): a Dutch prospective multicenter validation study. *Clin Breast Cancer* 2017;**17**:399–402
3. Esgueva A, Siso C, Espinosa-Bravo M, Sobrido C, Miranda I, Salazar JP et al. Leveraging the increased rates of pathologic complete response after neoadjuvant treatment in breast cancer to de-escalate surgical treatments. *J Surg Oncol* 2021;**123**:71–79

4. Hong J, Tong Y, He J, Chen X, Shen K. Association between tumour molecular subtype, clinical stage and axillary pathological response in breast cancer patients undergoing complete pathological remission after neoadjuvant chemotherapy: potential implications for de-escalation of axillary surgery. *Ther Adv Med Oncol* 2021;**13**:1758835921996673
5. Samiei S, van Nijnatten TJ, de Munck L, Keymeulen KB, Simons JM, Kooreman LF et al. Correlation between pathologic complete response in the breast and absence of axillary lymph node metastases after neoadjuvant systemic therapy. *Ann Surg* 2020;**271**:574–580
6. Samiei S, Simons JM, Engelen SME, Beets-Tan RGH, Classe JM, Smidt ML et al. Axillary pathologic complete response after neoadjuvant systemic therapy by breast cancer subtype in patients with initially clinically node-positive disease: a systematic review and meta-analysis. *JAMA Surg* 2021;**156**:e210891
7. Simons JM, van Nijnatten TJA, van der Pol CC, van Diest PJ, Jager A, van Klaveren D et al. Diagnostic accuracy of radioactive iodine seed placement in the axilla with sentinel lymph node biopsy after neoadjuvant chemotherapy in node-positive breast cancer. *JAMA Surg* 2022;**157**:991–999
8. Samiei S, de Mooij CM, Lobbes MB, Keymeulen KB, van Nijnatten TJ, Smidt ML. Diagnostic performance of noninvasive imaging for assessment of axillary response after neoadjuvant systemic therapy in clinically node-positive breast cancer: a systematic review and meta-analysis. *Ann Surg* 2021;**273**:694–700
9. Aktaş A, Gürleyik MG, Aksu SA, Aker F, Güngör S. Diagnostic value of axillary ultrasound, MRI, and <sup>18</sup>F-FDG-PET/CT in determining axillary lymph node status in breast cancer patients. *Eur J Breast Health* 2022;**18**:37–47
10. de Wild SR, Simons JM, Vrancken Peeters MTFD, Smidt ML, Koppert LB; MINIMAX Group. MINimal vs. MAXimal invasive axillary staging and treatment after neoadjuvant systemic therapy in node positive breast cancer: protocol of a Dutch multicenter registry study (MINIMAX). *Clin Breast Cancer* 2022;**22**:e59–e64
11. Koolen B, Donker M, Straver M, van der Noordaa M, Rutgers E, Valdes Olmos R et al. Combined PET-CT and axillary lymph node marking with radioactive iodine seeds (MARI procedure) for tailored axillary treatment in node-positive breast cancer after neoadjuvant therapy. *Br J Surg* 2017;**104**:1188–1196
12. van der Noordaa MEM, van Duijnhoven FH, Straver ME, Groen EJ, Stokkel M, Loo CE et al. Major reduction in axillary lymph node dissections after neoadjuvant systemic therapy for node-positive breast cancer by combining PET/CT and the MARI procedure. *Ann Surg Oncol* 2018;**25**:1512–1520
13. Aukema TS, Straver ME, Peeters M-JTV, Russell NS, Gilhuijs KG, Vogel WV et al. Detection of extra-axillary lymph node involvement with FDG PET/CT in patients with stage II–III breast cancer. *Eur J Cancer* 2010;**46**:3205–3210
14. NABON Breast Cancer Audit. *National Breast Cancer Guideline*. 2017. [https://richtlijndatabase.nl/richtlijn/borstkanker/behandeling\\_invasief\\_carcinoom/neoadjuvante\\_behandeling\\_systemische\\_therapie.html](https://richtlijndatabase.nl/richtlijn/borstkanker/behandeling_invasief_carcinoom/neoadjuvante_behandeling_systemische_therapie.html)
15. He ZY, Wu SG, Yang Q, Sun JY, Li FY, Lin Q et al. Breast cancer subtype is associated with axillary lymph node metastasis: a retrospective cohort study. *Medicine (Baltimore)* 2015;**94**:e2213
16. Zetterlund L, Celebioglu F, Hatschek T, Frisell J, de Boniface J. Long-term prognosis in breast cancer is associated with residual disease after neoadjuvant systemic therapy but not with initial nodal status. *Br J Surg* 2021;**108**:583–589
17. Ng S, Sabel MS, Hughes TM, Chang AE, Dossett LA, Jeruss JS. Impact of breast cancer pretreatment nodal burden and disease subtype on axillary surgical management. *J Surg Res* 2021;**261**:67–73
18. van Loevezijn AA, van der Noordaa ME, Stokkel MP, van Werkhoven ED, Groen EJ, Loo CE et al. Three-year follow-up of de-escalated axillary treatment after neoadjuvant systemic therapy in clinically node-positive breast cancer: the MARI-protocol. *Breast Cancer Res Treat* 2022;**193**:37–48
19. Garcia-Tejedor A, Fernandez-Gonzalez S, Ortega R, Gil-Gil M, Perez-Montero H, Fernandez-Montolí E et al. Can we avoid axillary lymph node dissection in N2 breast cancer patients with chemo-sensitive tumours such as HER2 and TNBC? *Breast Cancer Res Treat* 2021;**185**:657–666
20. Fayanju OM, Ren Y, Thomas SM, Greenup RA, Plichta JK, Rosenberger LH et al. The clinical significance of breast-only and node-only pathologic complete response (pCR) after neoadjuvant chemotherapy (NACT): a review of 20,000 breast cancer patients in the National Cancer Data Base (NCDB). *Ann Surg* 2018;**268**:591–601
21. Laot L, Laas E, Girard N, Dumas E, Daoud E, Grandal B et al. The prognostic value of lymph node involvement after neoadjuvant chemotherapy is different among breast cancer subtypes. *Cancers (Basel)* 2021;**13**:171
22. Comparison of Axillary Lymph Node Dissection with Axillary Radiation for Patients with Node-Positive Breast Cancer Treated with Chemotherapy. ClinicalTrials.gov identifier: NCT01901094. 2023. <https://clinicaltrials.gov/study/NCT01901094#publications>
23. Henke G, Knauer M, Ribi K, Hayoz S, Gérard MA, Ruhstaller T et al. Tailored axillary surgery with or without axillary lymph node dissection followed by radiotherapy in patients with clinically node-positive breast cancer (TAXIS): study protocol for a multicenter, randomized phase-III trial. *Trials* 2018;**19**:1–28
24. Gasparri ML, de Boniface J, Poortmans P, Gentilini OD, Kaidar-Person O, Banys-Paluchowski M et al. Axillary surgery after neoadjuvant therapy in initially node-positive breast cancer: international EUBREAST survey. *Br J Surg* 2022;**109**:857–863
25. Koolen BB, Valdés Olmos RA, Elkhuisen PH, Vogel WV, Vrancken Peeters M-JT, Rodenhuis S et al. Locoregional lymph node involvement on 18F-FDG PET/CT in breast cancer patients scheduled for neoadjuvant chemotherapy. *Breast Cancer Res Treat* 2012;**135**:231–240